

# Hotel Pineta Palace



## AUREA

### MAXIMUM CAPACITY (SETS)

Theatre Set Up:	70
U-Shape Table Set Up::	17
Classroom Set Up:	15

### DIMENSIONS:

Total area:	sqm	72,00
Width max:	mt	7,00
Length max:	mt	11,30
Height:	mt	2,44/2,59/2,89
Inside doors of access:	L x H	1,60 x 2,10 mt

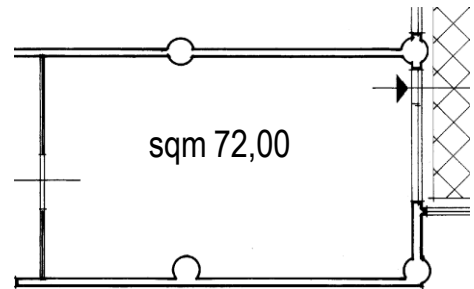
### OTHER EQUIPMENT'S AND SERVICES (over the general ones):

Dedicated control system with audio and video output

Other available services on request

### IDEAL FOR:

Small and Medium Meetings and Events



The Aurea room, also with natural light, is 72 square meters and is used for conferences and small training courses. It can be set up as a u-shape or as a round table layout.

Together with the Glauca room is often used as a space for hospitality of large events planned in the Excelsa room.

Technical equipment:

- Microphone with and without wire;
- screen and video projector
- flip chart;
- podium;
- possibility of connection of audio and video sources through a mobile amplification system.

